



CHATTERTON | REES



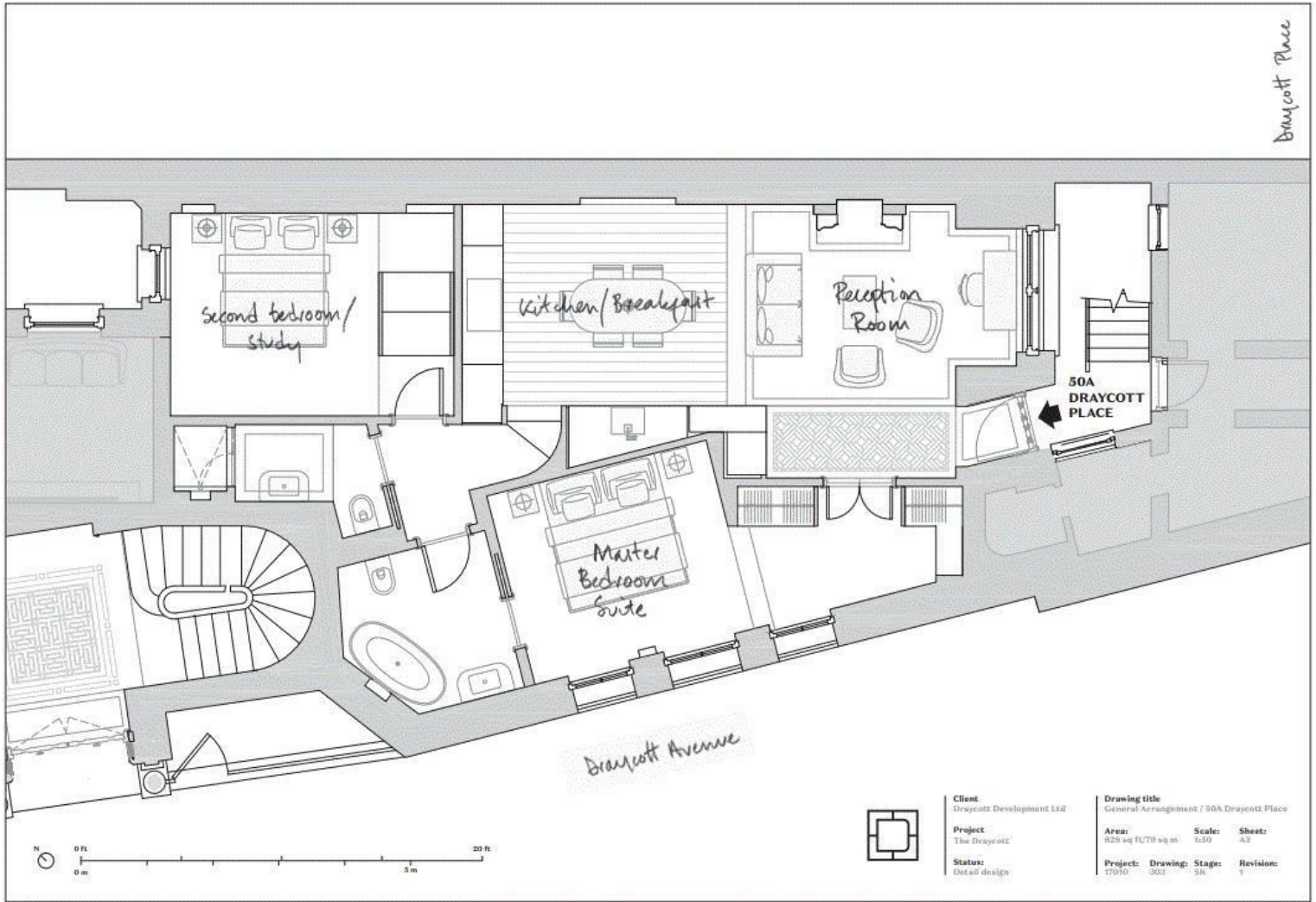
50A Draycott Place, London, SW3 2SA

Guide price £1,750,000

The Draycott is a collection of ten bespoke designed, limited edition revival style apartments in the heart of Chelsea and we are proud to bring to market this beautiful 2 bedroom, 2 bathroom apartment which is absolutely stunning. With the building's Dutch-inspired original terracotta façade, typical of Draycott Avenue, the internal structure has all been stripped away, renewed and reconfigured. The apartment is like no other with an attention to detail for both ease of living and aesthetically pleasing which is unrivalled in its field.

Chelsea has been an enclave of distinctive character and charm, attracting people from the worlds of art, music, fashion and theatre. Its history echoes through the streets -- forming a beat entirely of its own. This apartment beautifully marries the charm and character of the past with the modern day lifestyle where you can lock up and go and explore everything Chelsea has to offer.

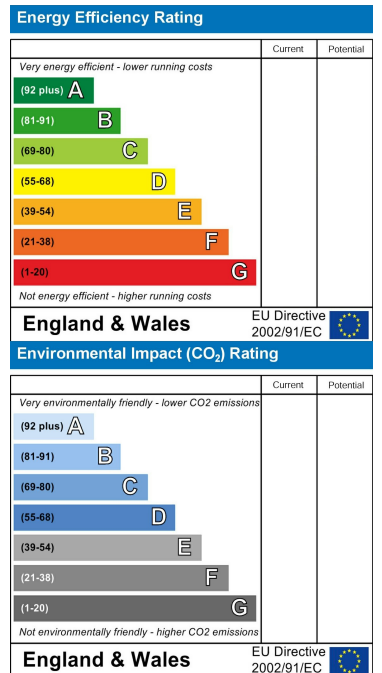
Floor Plan



Area Map



Energy Efficiency Graph



These particulars, whilst believed to be accurate are set out as a general outline only for guidance and do not constitute any part of an offer or contract. Intending purchasers should not rely on them as statements of representation of fact, but must satisfy themselves by inspection or otherwise as to their accuracy. No person in this firm's employment has the authority to make or give any representation or warranty in respect of the property.